



SAILING INSTRUCTIONS

International Dragon Class GRAND PRIX d'AALSMEER 2025

Organising Authority:
Yachtclub Aalsmeer (WV Aalsmeer)

1 Rules

1.1 See Notice of Race rule 1.

2 Notices to competitors

2.1 Notices to competitors will be posted on the official notice board on the WVA-website.
<https://www.wvaalsmeer.nl/noticeboard>.


3 Signals made ashore

3.1 Signals made ashore will be displayed from the flagpole near the clubhouse at WV Aalsmeer.
3.2 When flag AP is displayed ashore, "1 minute" is replaced by "not less than 30 minutes" in the race signal AP.

4 Schedule of races

4.1 See Notice of Race rule 5.4.
4.2 To alert boats that a race or sequence of races will begin soon, the orange starting line flag will be displayed with one sound signal at least five minutes before a warning signal is made.

5 Class flag

5.1 Class flag will be "D" 

6 Racing area

6.1 Attachment A shows the location of the racing area.
The racing area will be the "Grote Poel" of the Westeinderplassen.

7 The courses

7.1 The diagrams in Attachment B shows the courses, including the order in which marks are to be passed, and the side on which each mark is to be left.

8 Marks

8.1 Marks 1, 1A, 2S, 2P will be orange buoys.
8.2 Mark 3 will be a yellow buoy.
8.3 The starting marks will be a staff displaying an orange flag at the port end and the race committee signal boat at the starboard end.
8.4 The finishing marks will be a staff displaying a blue flag and a race committee boat.
8.5 A race committee boat signalling a change of a leg of the course is a mark as provided in instruction 10.2.

9 The start

9.1 The starting line will be between a staff displaying an orange flag on the committee boat at starboard and the course side of the port-end starting mark.
9.2 Rule A5.3 applies.
9.3 A boat starting later than 4 minutes after her starting signal will be scored Did Not Start (DNS) without a hearing. This changes rule A5.1 and A5.2.



10 Change of the position of the next mark

- 10.1 In case of a minor course change, such at the discretion of the Race Committee, no signal will be given because the marks are visible at all times. This changes RRS 33.
- 10.2 Except at a gate, boats shall pass between the race committee vessel signalling the change of the next leg and the nearby mark, leaving the mark to port and the race committee vessel to starboard.

11 The finish

- 11.1 Course A,B,C: The finishing line will be between a staff displaying a blue flag on the committee boat at starboard end and the course side of the port-end finishing mark.
- 11.2 Course D,E,F,G,H,I: The finishing line will be between a staff displaying a blue flag on the committee boat at port end and the course side of the starboard-end finishing mark.
- 11.3 Boats shall not cross the finishing line on the downwind leg before rounding mark 3 to finish.

12 Penalty system

- 12.1 Rule 44.1 is changed so that the Two-Turns penalty is replaced by the One-Turn penalty.

13 Time limits

- 13.1 Target time for each race is 45 minutes. Failure to meet the target time will be no grounds for redress. This changes rule 61.1(a).
- 13.2 If no boat has passed Mark 1 within 30 minutes the race will be abandoned.
- 13.3 Boats failing to finish within 15 minutes after the first boat sails the course and finishes will be scored Time Limit Exceeded (TLC) without a hearing.
- 13.4 A boat scored TLE shall be scored points for the finishing place one more than the points scored by the last boat that finished within the Finishing Window. This changes RRS 35, A5.1, A5.2 and A10.

14 Protest and requests for redress

- 14.1 Protest time limit is 60 minutes.
- 14.2 Hearing/protest forms are available at the regatta office.
- 14.3 Notices will be posted not later than 30 minutes of the protest time limit to inform competitors of hearings in which they are parties or named as witnesses.
- 14.4 Hearings will be held in the protest room, beginning as soon as possible.

15 Scoring

- 15.1 See Notice of Race rule 10.

16 Safety regulations

- 16.1 A boat that retires from a race shall notify the race committee as soon as possible.
- 16.2 When flag Y is displayed ashore or on the website noticeboard, rule 40 applies at all times while afloat. This changes rule 40.2.

17 Equipment and measurement checks

- 17.1 A boat or equipment may be inspected at any time for compliance with the class rules and sailing instructions. On the water, a boat can be instructed by a race committee measurer to proceed immediately to a designated area for inspection.

18 Official boats

- 18.1 Official boats will signal an orange flag with the letter C or R.

19 Support boats

- 19.1 Team leaders, coaches and other support personnel shall stay outside areas where boats are racing from the time of the preparatory signal to start until all boats have finished or the race committee signals a postponement, general recall or abandonment.



20 Trash disposal

20.1 Trash may be placed aboard support or official boats.

21 Haul-out restrictions

21.1 Keelboats shall not be hauled out between the races of a series, except with and according to the terms of prior written permission of the race committee.

22 Diving equipment and plastic pools

22.1 Underwater breathing apparatus and plastic pools or their equivalent shall not be used around keelboats between the starting signal of the first race and the end of the series.

23 Radio communication

23.1 Except in an emergency, a boat shall neither make radio transmissions while racing nor receive radio communications not available to all boats. This restriction also applies to mobile telephones. The race committee may communicate relevant information to sailors on VHF channel 72.

23.2 Electronic equipment other than timers, compasses and VHF permitted by the Class Rules and in accordance with NoR rule 1.5 shall not be carried on board, except for mobile telephones and the like, which shall be switched off while racing.

24 Prizes

24.1 See Notice of Race rule 11.

25 Disclaimer of liability

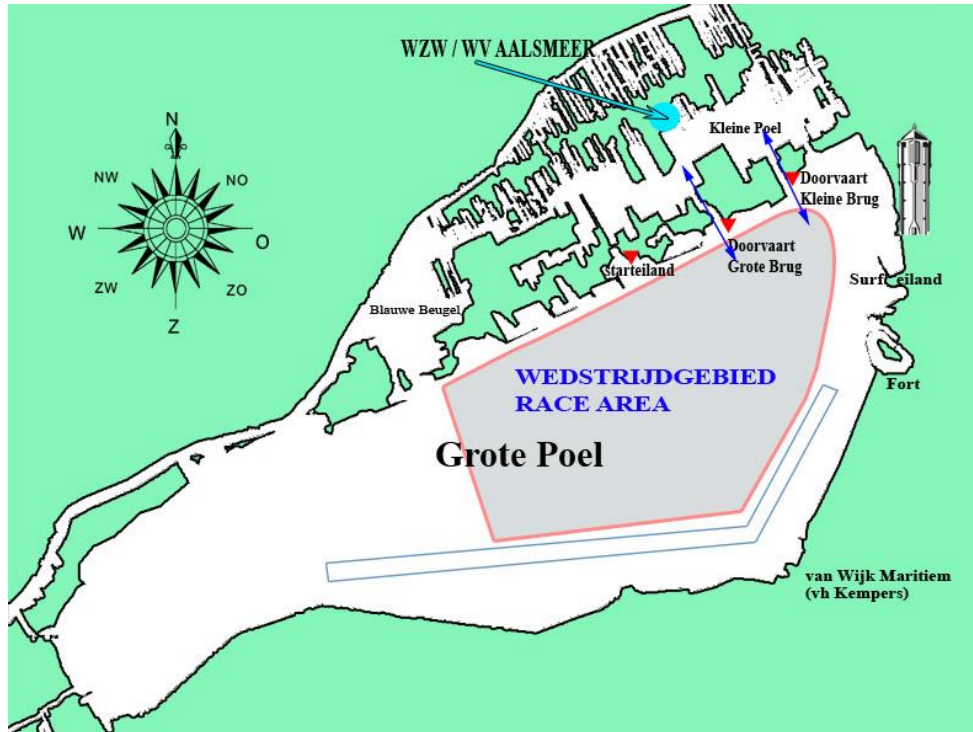
25.1 Competitors participate in the regatta entirely at their own risk. See rule 3, Decision to Race. The organizing authority will not accept any liability for material damage or personal injury or death sustained in conjunction with or prior to, during, or after the regatta.

26 Insurance

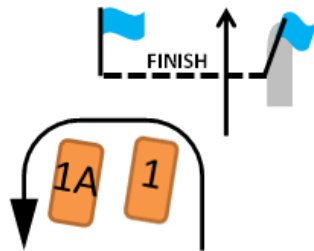
26.1 Each participating boat shall be insured with valid third-party liability insurance with a minimum cover of € 1.500.000 per incident or the equivalent.



Attachment A



Attachment B

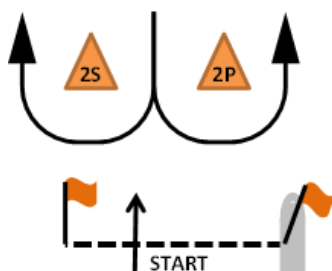


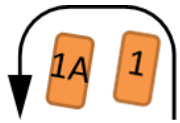
Course A: Start - 1 - 1A - 2P/2S - Finish
Course B: Start - 1 - 1A - 2P/2S - 1 - 1A - 2P/2S - Finish
Course C: Start - 1 - 1A - 2P/2S - 1 - 1A - 2P/2S - 1 - 1A - 2P/2S - Finish

Marks 1, 1A and 2P to be left on port side. Mark 2S on starboard side.

The course sign is a black letter on a yellow background.

Please note that the marks of the gate will consist of two buoys, if one is missing the remaining buoy must be left to port.





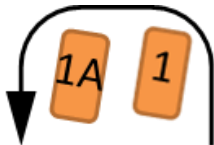
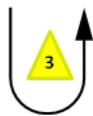
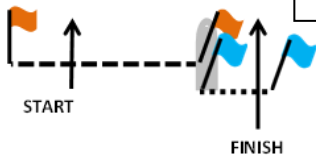
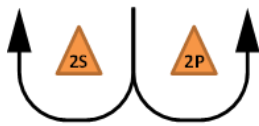
Course D: Start - 1 - 1A - 2P/2S - 1 - 1A - 3 - Finish
Course E: Start - 1 - 1A - 2P/2S - 1 - 1A - 2P/2S - 1 - 1A - 3 - Finish
Course F: Start - 1 - 1A - 2P/2S - 1 - 1A - 2P/2S - 1 - 1A - 2P/2S - 1 - 1A - 3 - Finish

Marks 1, 1A, 2P and 3 to be left on port side. Mark 2S on starboard side.

The course sign is a black letter on a yellow background.

Please note that the marks of the gate will consist of two buoys, if one is missing the remaining buoy must be left to port.

Do not cross the finishline on the downwind leg before rounding mark 3.
See rule 11.3

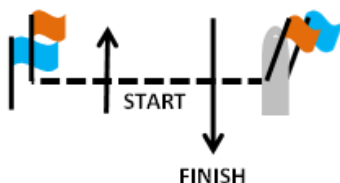


Course G: Start - 1 - 1A - 2P/2S - 1 - 1A - Finish
Course H: Start - 1 - 1A - 2P/2S - 1 - 1A - 2P/2S - 1 - 1A - Finish
Course I: Start - 1 - 1A - 2P/2S - 1 - 1A - 2P/2S - 1 - 1A - 2P/2S - 1 - 1A - Finish

Marks 1, 1A and 2P to be left on port side. Mark 2S on starboard side.

The course sign is a black letter on a yellow background.

Please note that the marks of the gate will consist of two buoys, if one is missing the remaining buoy must be left to port.





ATTACHMENT C

Sailing Conditions / Guidelines

Warning Signal

1. The warning signal should not be made if the wind speed in a substantial part of the racing area is below 5 knots or above 25 knots for a period of at least 5 minutes before the warning signal.
2. The warning signal should not be made if wind speeds above 25 knots are expected or have been forecast for the racing area during the time of the race.

Abandoning Races

1. A race should be abandoned if the wind speed drops below 2 knots in a substantial part of the racing area for a period of 5 minutes or more.
2. A race should be abandoned once the sustained wind speed reaches or exceeds 30 knots at any time before the first boat has crossed the finishing line.
3. A race should be abandoned if a wind shift of more than 25 degrees occurs before the first boat arrives at the first windward mark.

A race should be abandoned if it is thought that less than 30% of the Fleet will finish within the time limit.